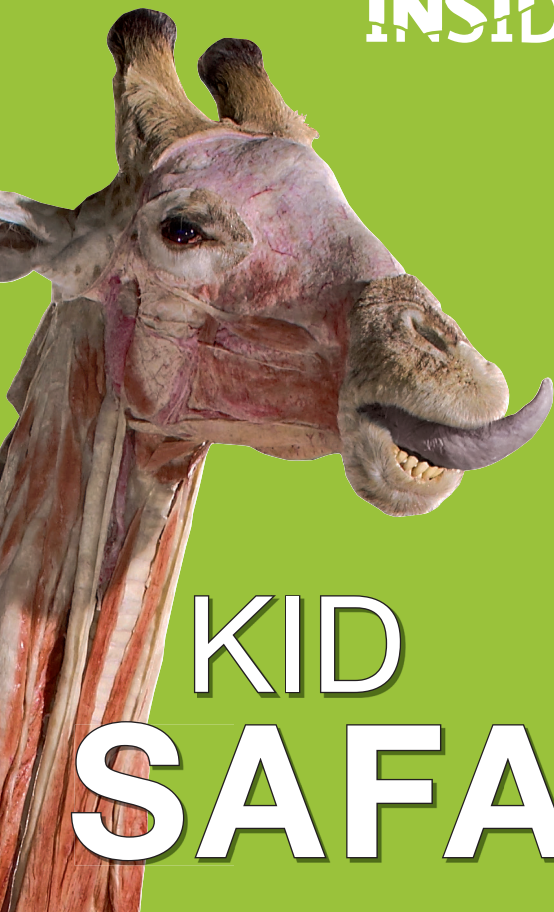


BODY WORLDS

**ANIMAL
INSIDE OUT**



KID

**NAT GEO
WILD**

SAFARI

BODY WORLDS

ANIMAL INSIDE OUT



Safari Explorers wanted!

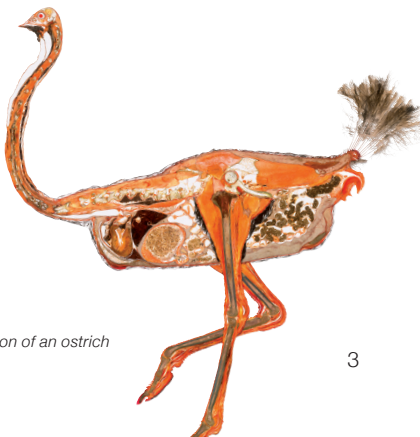
Are you familiar with and knowledgeable about animals?
Do you know everything about elephants, giraffes
and animals large and small?

Then grab a pen and become an adventurer
on our exciting KID SAFARI.

Mark the right answers and you will find the solution
to the puzzle, by placing the corresponding letters
above the corresponding numbers
at the end of this activity.

As long as you carefully
read the signs next to the animals,
it will be very easy.

Have fun and good luck!



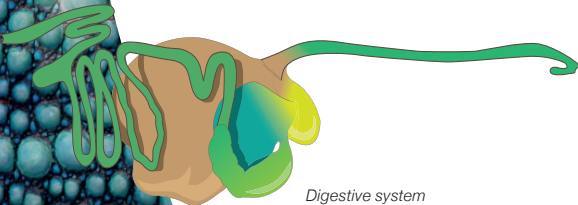
Longitudinal section of an ostrich

1. How many stomach chambers do ruminants, such as sheep, have?

T 2 chambers

A 4 chambers

Z 6 chambers



*Digestive system
of a ruminant*

2. Which reindeers have antlers?

- I Male
- K Female
- N Both



Reindeer

3. What degree are horses able to rotate their ears?

- 45 degrees
- 90 degrees
- 180 degrees



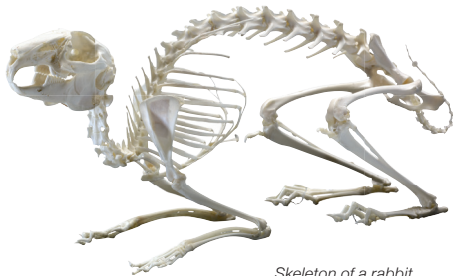
*Blood vessel configuration
of a horse's head*

4. How much percent of a rabbit's body mass does its skeleton account for?

(T) 8 %

(S) 17 %

(A) 38 %



Skeleton of a rabbit

**5. Giraffes are herbivores and ruminants.
Compared to other ruminants,
giraffes are capable of ...**

- L sleeping while ruminating
- O walking while ruminating
- F sitting while ruminating



Giraffe while drinking

6. Horses are ...

(B) Plantigrades

(M) Ungulates

(E) Digitigrades



Filly



Ungulates (zebra)



Digitigrades (dog)



Plantigrades (humans)

7. Bulls are usually about the same height as females or a bit taller. In comparison bulls weigh ...

Y Twice as much

I The same

E Half as much



Bull

8. Why does an African ostrich only have two toes?

- O As an adaptation to their high-speed running
- L To catch prey more easily
- M As an adaptation to the dry heat



Ostrich

9. How long is the dense network of blood vessels in a human when laid end to end?

- (D) 590 kilometers (360 miles)
- (F) 96,500 kilometers (60,000 miles)
- (R) 87 kilometers (54 miles)



*Blood vessel configuration
of a human hand*

10. The octopus is a cephalopod and breathes ...

- (N) through its lungs
- (T) through its skin
- (A) through its gills



Octopus

11. Sharks are ...

N cartilaginous fish

P teleost fish

H sinew fish



Mako shark

**12. Giraffes are ruminants,
their tongue can be ...**

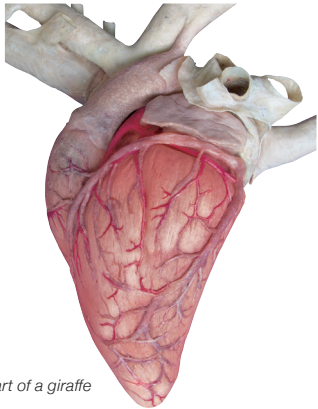
- I up to 50 centimeters (20 in.) long
- E up to 20 centimeters (8 in.) long
- A up to 80 centimeters (30 in.) long



Tongue of a giraffe

13. The heart of a giraffe weighs ...

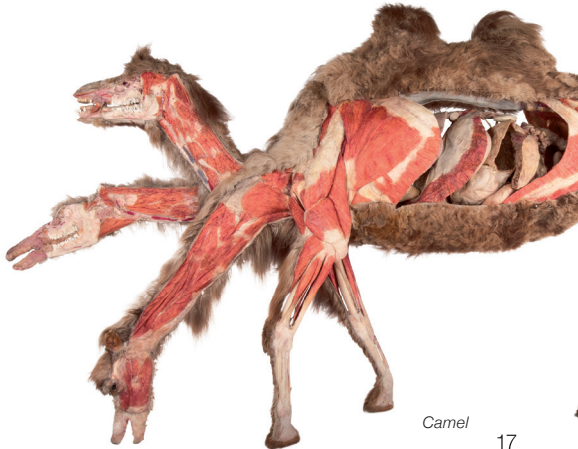
- O more than 30 kilograms (about 60 lbs.)
- N more than 20 kilograms (about 40 lbs.)
- M more than 10 kilograms (about 20 lbs.)



Heart of a giraffe

14. What are the humps of camels used for?

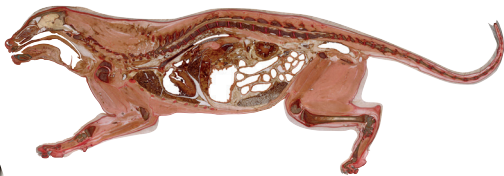
- I Water storage
- A Fat storage
- O The humps are muscles



Camel

15. Up to what distance
are you able to hear a lion roar?

- L 4 kilometers or more (2.5 miles)
- R 400 meters or more (0.25 miles)
- M 40 kilometers (25 miles)



Longitudinal section of a lion

16. How much does a human heart weigh?

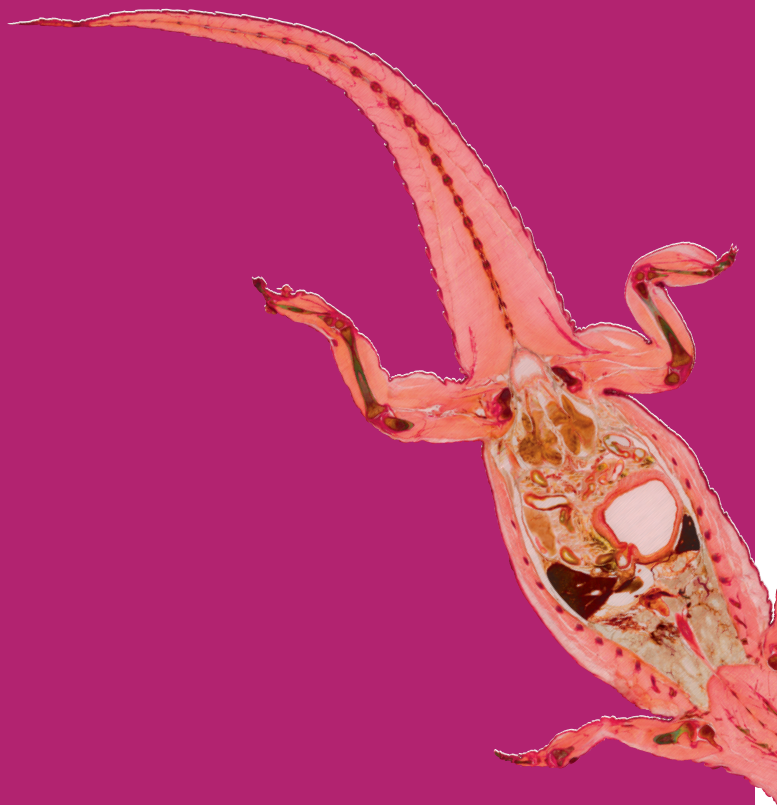
(E) 600 grams (20 oz.)

(S) 300 grams (10 oz.)

(U) 900 grams (30 oz.)

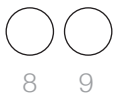


Human heart



Cross-section of a young Yacare caiman

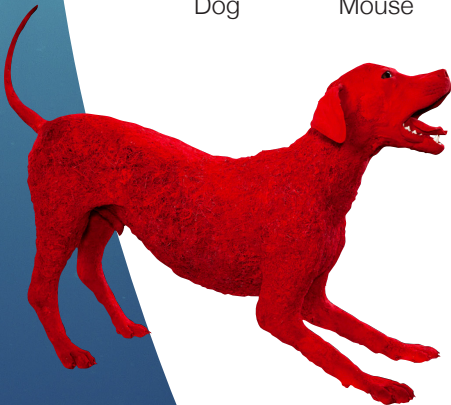
**If all of your answers are right,
you will be able to solve the puzzle.**



WORD SEARCH

Every word that is listed below is hidden horizontally, vertically, diagonally, but also backwards within the scrambled letters. Can you find them?

Bear	Elephant	Rabbit
Bird	Fish	Snake
Butterfly	Frog	Squirrel
Cat	Horse	Zebra
Cow	Monkey	
Dog	Mouse	



*Blood vessel configuration
of a dog*

S O O V M P S E P F L Y E K N O M K
 P M D A B M E A X G B F B Z Z Q J C
 T R N H B K W S K Q O T I C E O R Y
 I S B S P Z Y G O B J K D L Z B E Y
 B T H I D Y R A E B I B L E I B R X
 B V S F G G D V X R F W K O L U Y A
 A C A T M R O R M F K E
 R W F R K Q W W J I K K
 S U P R F U H Y U A T J
 U X P Z O G A G N M N B
 O T F K W G D S L N A U
 H W G Z S R E E F J H T
 Z P F D S O Z C E J L S R Q B K P T
 D N Z N U J T M I S U R W B F M E E
 N O K M U O T E W O I D O I D S L R
 U K G W D S S S M U I G C R R U E F
 O D R N O F A X Q P Y J I O P Q O L
 G U R B J C W S L W A B H B L G V Y



Cuttlefish

Jul 2016 US



Take a picture
of your favorite specimen in the exhibition
and share it #animalinsideout

www.facebook.com/BodyWorldsExhibition/



BODY WORLDS

**ANIMAL
INSIDE OUT**

www.animalinsideout.com

